

# All About Accommodations

Tuesdays for Teachers  
Summer Session  
August 24, 2021



# Agenda

- Overview
- Disability categories
- Accommodation process
- Documentation requirements
- Best way to assist
- Questions



# Updates to how students apply for testing accommodations in GED.com



# Recent GED.com changes

- We're simplifying the GED sign-up process to make it easier for students to create an account
- We're removing some questions from account sign-up, and will ask them later in the journey when they're more relevant
- We no longer ask students during account sign-up if they need a testing accommodation, but ask them once they get to their student portal

# Students will see a new Notification asking if they need a testing accommodation

The screenshot displays the MyGED user interface. At the top, there is a navigation bar with links for Home, Study, My Scores, and More, along with a SCHEDULE TEST button. On the right, there are icons for Notifications and Profile. The main content area features a blue header with a greeting: "Good Afternoon Eliza. Believe you can and you're halfway there. - T. Roosevelt." Below this, there are three subject tiles: Language Arts, Social Studies, and Science. A red circle highlights a new notification in the right-hand sidebar. The notification asks, "Do you need modified testing (accommodations) for your test?" and provides information about modified testing for students with documented learning disabilities or impaired vision. It includes a link to "Request a testing accommodation". Below the notification is a section for "Virginia GED® Test Information" and a "Welcome!" message.

Home Study My Scores More **SCHEDULE TEST** Notifications Profile

Good Afternoon Eliza  
Believe you can and you're halfway there.  
– T. Roosevelt

Language Arts Social Studies Science Math

**Notifications**

Do you need modified testing (accommodations) for your test?

We provide modified testing under certain circumstances like for those with documented learning disabilities or impaired vision. To qualify, you will need to provide supporting documentation.

[Request a testing accommodation >](#)

**Virginia GED® Test Information**

Did you know each location has their own set of rules? Review Virginia's test rules so you'll know what to expect.

Welcome!

Welcome to MyGED®! To get started view the [GED® Test Test](#) and learn about the

# Students can also click their Profile drop-down to apply for Accommodations

GED TESTING SERVICE®

Home Study My Scores More ▾ SCHEDULE TEST

Notifications Profile

Good Afternoon Eliza

Believe you can and you're halfway there.  
– T. Roosevelt

Language Arts Social Studies Science Math

**My Goals**

Subject: Language Arts [Edit](#)

Test Goal Date: Not Set [Edit](#)

Eliza Wong  
20210823-0947-1585  
[Edit Profile](#)

Alerts

Appointments

**Accommodations**

Order Status

Log Out

These changes allow students to apply for a testing accommodation anytime within their portal, without slowing them down during the account sign-up process



# Accommodations Overview



Purpose of  
Accommodations



Not a Guarantee  
of improvement



Individualized  
Consideration



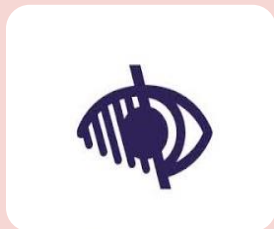
Appropriate  
Documentation

# Categories of Disabilities



**Learning and  
Other  
Cognitive  
Disabilities**

Documentation  
within the last 5  
years



**Attention  
Deficit  
Hyperactivity  
Disorder**

Documentation  
within the last 5  
years



**Psychological  
and  
Psychiatric  
Disorders**

Documentation  
within the last 1  
year



**Physical  
Disorders and  
Chronic  
Health  
Conditions**

Documentation  
within the last 1  
year



# What is NOT considered a disability?

ESL

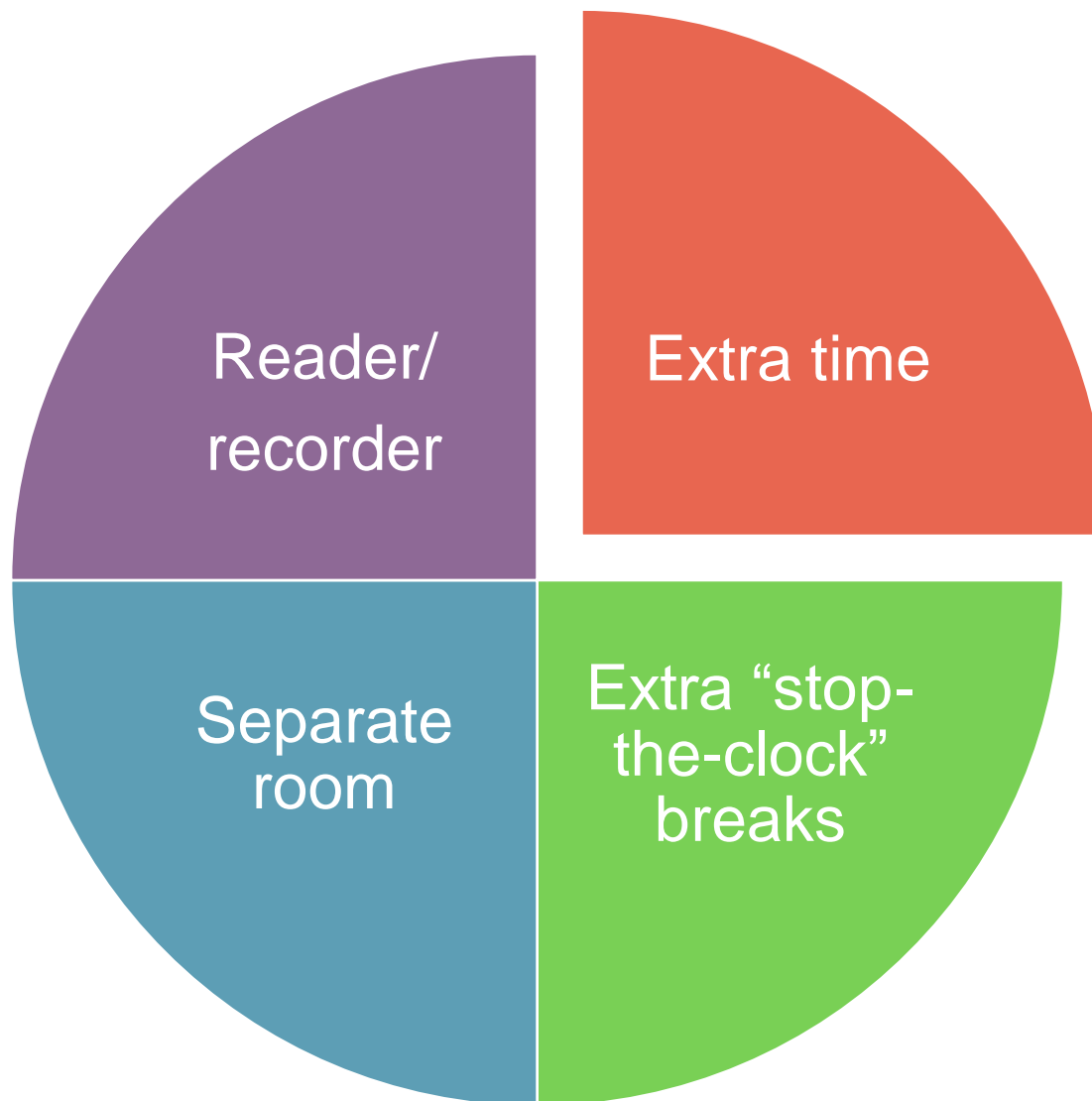
“Slow Learner”

Active substance abuser

Test anxiety

Homemade diagnoses

# Commonly Requested Accommodations

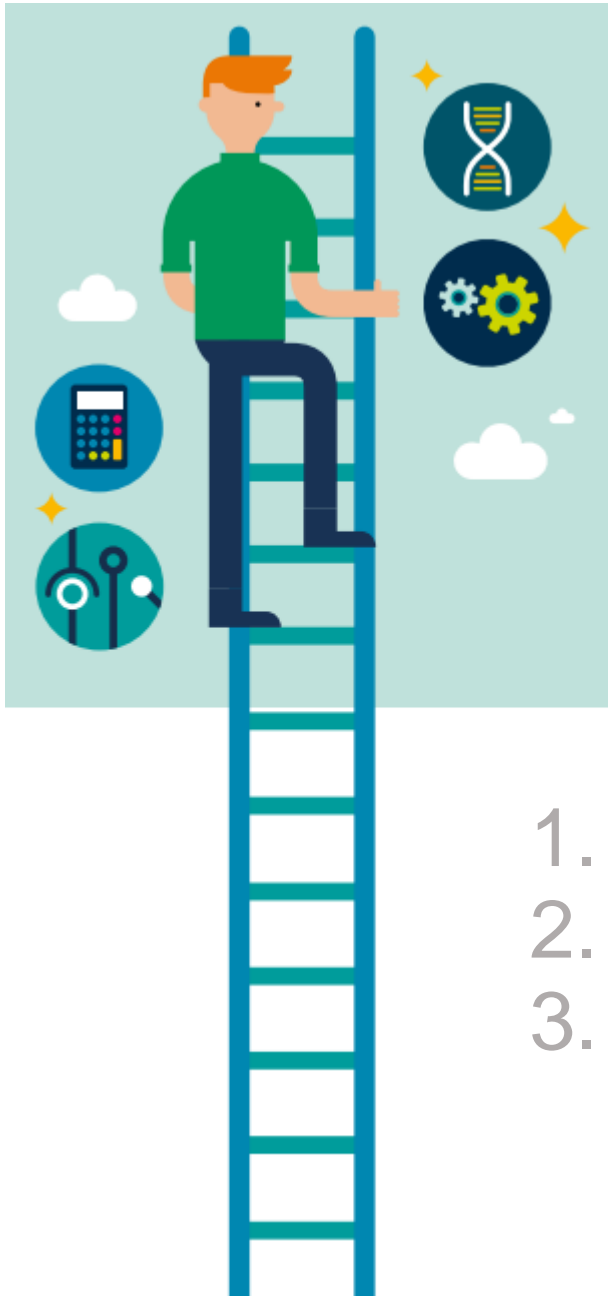


# Documentation Guidelines

Review documentation guidelines

[https://ged.com/about\\_test/accommodations/](https://ged.com/about_test/accommodations/)





## Top 3 causes of an incomplete application

1. No supporting documentation
2. Missing pages
3. Outdated documentation

# Accommodation System Features

## Online Request System

- Candidates request accommodations online. Starts with them clicking “yes” to the accommodation question on GED.com

## Web Scheduling

- Candidates with approvals of extra time, breaks and other things that do not require manual intervention are directed to schedule online.

# Assistive Technology

Universal  
Access  
features

Adaptive  
equipment

Magnification

JAWS

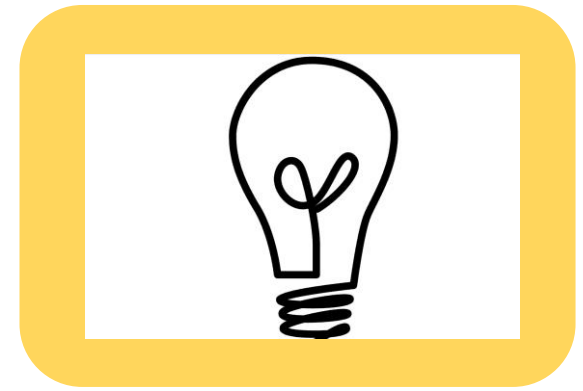
# Emerging Trends in Accommodations and Accessibility



Accommodation  
vs Fundamental  
Alteration



Accommodations  
vs Security



Non-standard  
requests

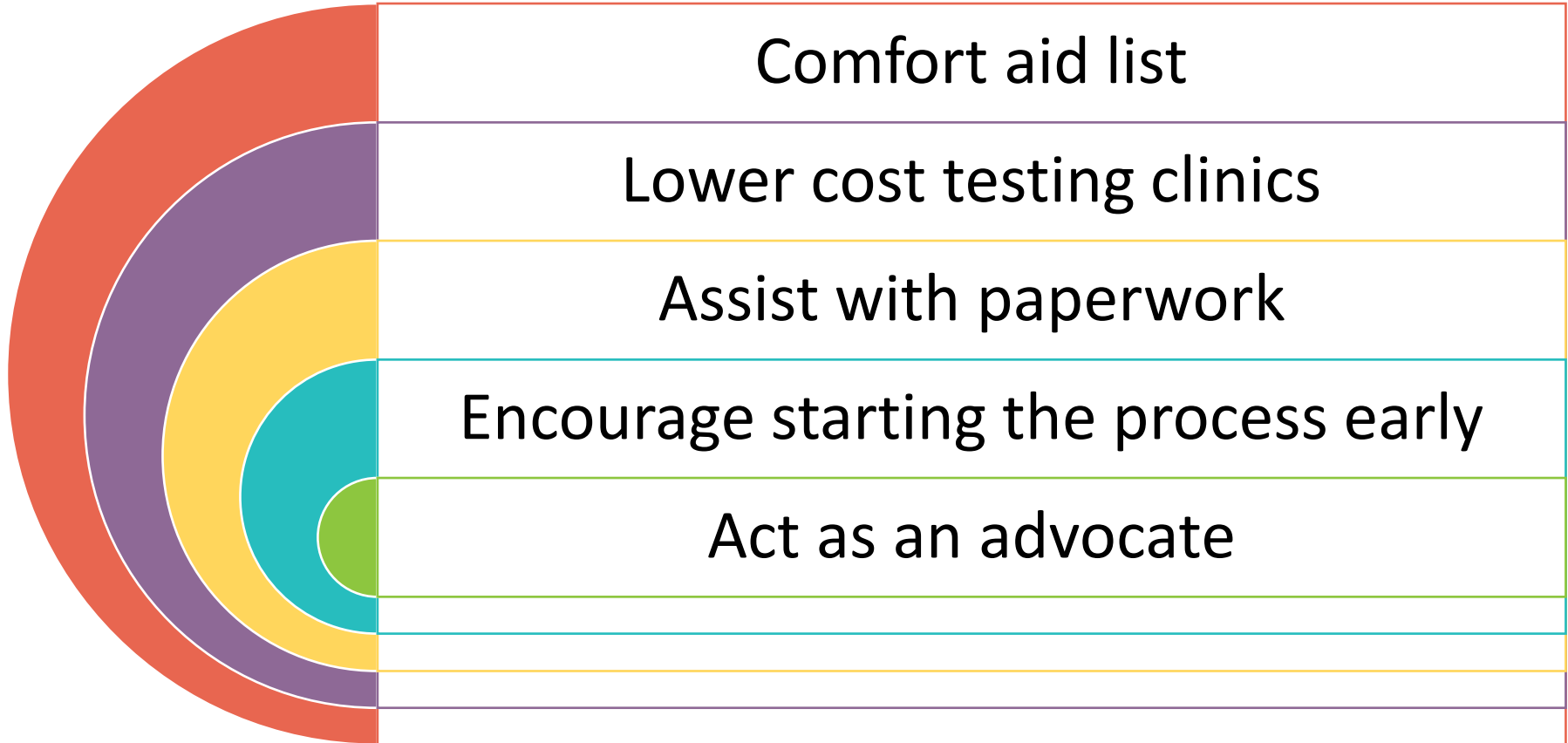


# Accommodation Review Process

- Who reviews requests?
- How are determinations made?
  - Consider all documentation
  - Continual calibration
  - Written explanations



# How can you help your students?



# Outer Limits of Accommodations

The accommodation cannot be so extreme that test validity is compromised

- Unlimited time

The accommodation cannot fundamentally alter the test's purpose

- Waiving a portion of the test

The accommodation cannot jeopardize test security or the safety of staff/others

- Administer medical care

# Resources on the Accommodation Page

## Additional Resources

- [Frequently Asked Questions](#)
- [Lower-cost Testing Clinics in the United States](#)
- [Personal Items and Minor Modifications](#)

Questions? Email [accommodations@GED.com](mailto:accommodations@GED.com).



# Resources

## Accommodation page

- [https://ged.com/about\\_test/accommodations/](https://ged.com/about_test/accommodations/)

## Paper request forms

- [https://ged.com/educators\\_admins/test\\_admin/corrections/](https://ged.com/educators_admins/test_admin/corrections/)

## Contact us!

- [accommodations@ged.com](mailto:accommodations@ged.com)



# Questions?

# Contact Information

**Debbie Bergtholdt**

*Manager, Accommodations*

*Debbie.Bergtholdt@pearson.com*

*accommodations@ged.com*

